

1 GENERAL DESCRIPTION OF DATA CENTRE CONTAINER

1 IT container 40' provided with anti-seismic system ,1 Natural Free Cooling Container 40', 17 Racks and Rail Guides for IT equipment installation, 1 Access Control with Fingerprint Scanner, 8 cable glands for piping and cabling entrance, 2 bus bars for electrical distribution, all electrical power provided inside the SSC including cable trays, switch boards and lighting, fire protection system, PLC high availability redundancy install outside of the container.

Useful surface: 23,96 m²
Total power to racks 240 kW

2 DIMENSIONS

OUTSIDE DIMENSIONS		
Length	mm	12.190
Width	mm	2.440
Height	mm	2.900
INSIDE DIMENSIONS		
Length	mm	11.820
Width	mm	2.120
Height	mm	2.520
WEIGHT		
Max. gross weight	kg	30.480
Max. net weight	kg	26.580
Tare weight	kg	3.900
CAPACITY	m ³	76,20



3 STRUCTURE

40" shipping container with following.

Use	Thickness (mm)	Width (mm)	Height (mm)	Weight (kg/m ²)	Fire protection	Acoustic isolation (dB)
<i>Wall</i>	80	1170	2520	24	120minuts	31

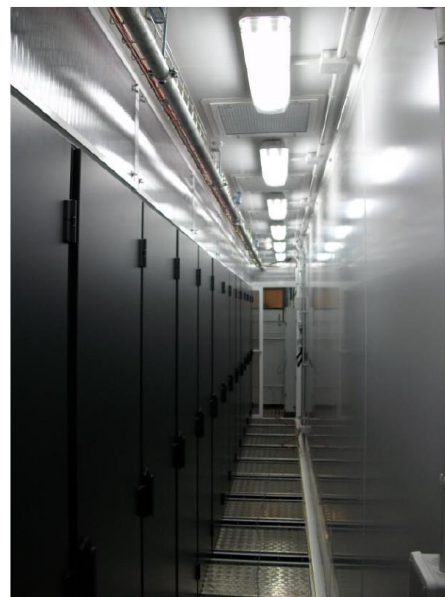
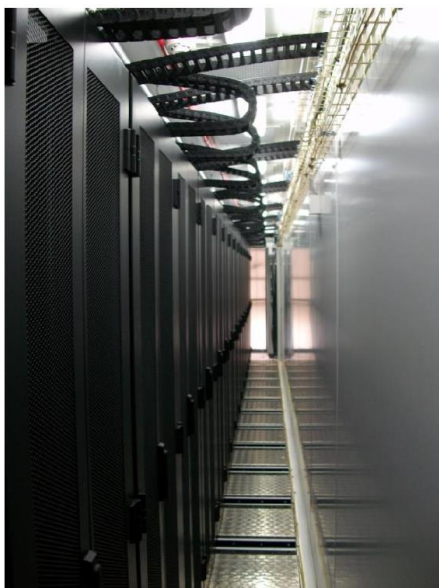
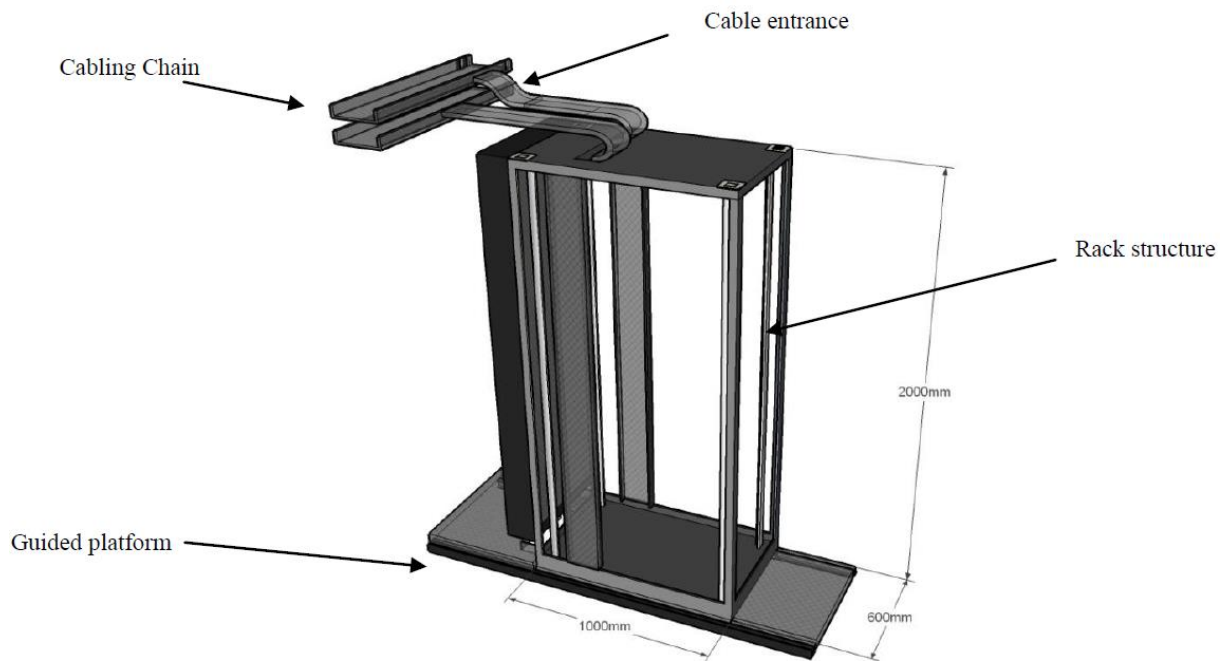
Use	Thickness (mm)	Width (mm)	Height (mm)	Weight (kg/m ²)	Fire protection	Acoustic isolation (dB)
<i>Ceiling</i>	80	1170	2120	24	120 minutes	31

Use	Thickness (mm)	Width (mm)	Height (mm)	Weight (kg/m ²)	Fire protection	Acoustic isolation (dB)
<i>Floor</i>	60	1170	2120	21	60 minutes	29

N° of Doors	Sheets	Galvanized Frame (mm)	Thickness (mm)	Width (mm)	Height (mm)	Fire Protection	Type
3	1	1,2 at double face	120	1200	2300	60 minutes	Main & Emergency

4 RACKS

17 compute racks 600mm x 800mm of 41 ru 16bracks have extension of 200mm to be total of 1000 in depth



5 POWER SYSTEM

External UPS bypass panel for 3*160kW parallel connected UPS system is available. This is a single panel for both A/B-feed and cooling system.

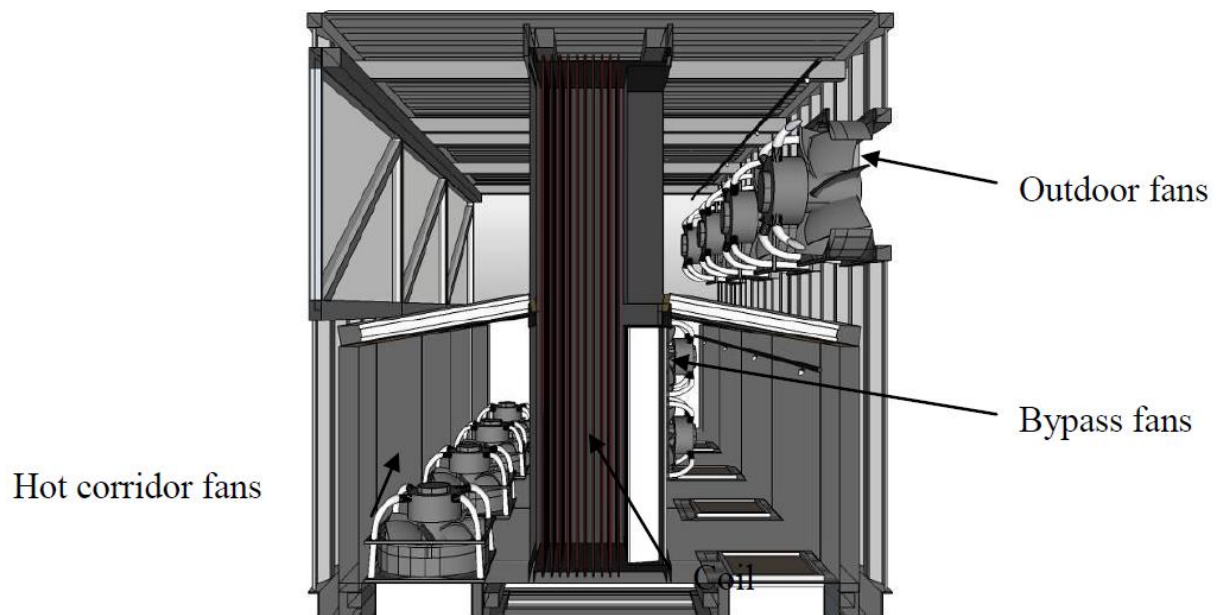
Power is above 2 * Top of rack star line 400A busbars A and B-feed.

17 tap-off boxes on each busbar.

6 COOLING SYSTEM

Free air cooling with heat pipe coil. The coil is composed by 300 copper ducts with a special gas contained inside of them. These ducts exchange heat with two opposite air flows with high values of efficiency.

To fulfil the exchange tasks the coil doesn't need chiller or any cooling support which could increase the electricity consume, decreasing the efficiency levels.



7 FIRE SYSTEM

Fire detection system installed, minimax and Argon gas extinction system